

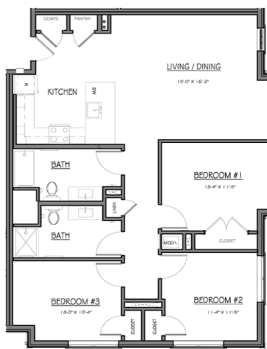
FLOOR PLANS



ONE BEDROOM - 720 SF



2 BEDROOM - 940 SF



THREE BEDROOM - 1300 SF

UNIT TYPE

ONE
BEDROOM

TWO
BEDROOM

THREE
BEDROOM

# OF UNITS	HOUSEHOLD SIZE	RENT RANGE	INCOME RANGE PER HOUSEHOLD SIZE *
3	1-2	30% of Gross Income	Below \$36,000 (1 person) Below \$41,150 (2 people)
7	1-2	\$1,639 - \$1,929	\$49,189 (min) - \$72,000 (max) (1 person) \$49,189 (min) - \$82,320 (max) (2 people)

8	2-4	30% of Gross Income	Below \$41,150 (2 people) Below \$46,300 (3 people) Below \$51,400 (4 people)
17	2-4	\$1,966 - \$2,314	\$59,007 (min) - \$82,320 (max) (2 people) \$59,007 (min) - \$92,580 (max) (3 people) \$59,007 (min) - \$102,840 (max) (4 people)

5	3-6	30% of Gross Income	Below \$46,300 (3 people) Below \$51,400 (4 people) Below \$55,550 (5 people) Below \$59,650 (6 people)
5	3-6	\$2,272 - \$2,674	\$68,187 (min) - \$92,580 (max) (3 people) \$68,187 (min) - \$102,840 (max) (4 people) \$68,187 (min) - \$111,120 (max) (5 people) \$68,187 (min) - \$119,340 (max) (6 people)

* 30% AMI GROSS INCOME PER 2026 HUD LIMITS; 60% AMI GROSS INCOME PER 2026 HUD MTSP LIMITS
RENT AND INCOME LIMITS SUBJECT TO CHANGE WITH HUD ANNUAL UPDATE(S)

RENT INCLUDES

- Free PARKING onsite
- UTILITIES (heat, A/C, electricity, water)

PROPERTY FEATURES

- Card-operated laundry on each floor
- Heat and A/C individually-controlled
- Children's play area and half basketball court
- Community gardens
- Walking paths
- Furnished exterior terrace
- Private patios and entrances (some units)
- Great views (many units)
- Community room (for birthday parties or small gatherings) and children's play and activity room
- Tile bathrooms, large windows, wood-look vinyl plank floors, and new kitchen appliances
- Close to downtown Hamilton shops and restaurants, MBTA Commuter Rail, and Routes 128, 97, and 1



Property View



Inside Apartment

Public Information Session #1: July 22, 2026 at 10am

Public Information Session #2: August 4, 2026 at 6pm

APPLICATION DEADLINE: SEPTEMBER 1, 2026

Lottery Drawing: October 6, 2026 at 6pm

Info Sessions and Lottery on Zoom and in-person at the Hamilton-Wenham Public Library, 14 Union Street, Hamilton, MA

APPLICATION INFORMATION

Applications will be available starting June 1, 2026.

To apply, print [HERE](#). You may also request an application via email at AsburyLottery@harborlighthomes.org or call 978-922-1305 (TTY/TTD Dial 711) to receive by mail. Applications also available for pick-up at Hamilton Town Hall, Hamilton-Wenham Public Library, and Harborlight Homes, 600 Cummings Center, Suite 270-X, Beverly, MA 01915, (Monday-Friday 8:30am-4:30pm).

FREE language assistance available for all applicants.

